

Class: **AP Bio 12-13**

Description:

---

Test: **MT Rev Chem-Cell**

Test Points: **588**

Test Number: **7834**

Printed: **16-January-13 09:32**

---

1) Temperature usually increases when water condenses. Which behavior of water is most directly responsible for this phenomenon?

- A \_\_\_\_\_ change in density when it condenses to form a liquid or solid
- B \_\_\_\_\_ reactions with other atmospheric compounds
- C \_\_\_\_\_ release of heat by the formation of hydrogen bonds
- D \_\_\_\_\_ release of heat by the breaking of hydrogen bonds
- E \_\_\_\_\_ high surface tension

2) The pH Scale is a way of measuring :

- A \_\_\_\_\_ the relative concentrations of H<sub>2</sub>O vs H<sub>3</sub>O
- B \_\_\_\_\_ Ions in solution when a solute is added.
- C \_\_\_\_\_ the relative concentrations of hydrogen and hydroxide ions
- D \_\_\_\_\_ the relative concentrations Acid vs Base

3) What is the maximum number of hydrogen bonds a water molecule can form with neighboring water molecules?

- A \_\_\_\_\_ 2
- B \_\_\_\_\_ 4
- C \_\_\_\_\_ 6
- D \_\_\_\_\_ 8

4) Which of the following is NOT true about water dissolving solutes?

- A \_\_\_\_\_ Water will only be attracted to solutes with polar covalent bonds.
- B \_\_\_\_\_ Water molecules surround the solute's molecules
- C \_\_\_\_\_ Water cannot dissolve large molecules, such as proteins or carbohydrates
- D \_\_\_\_\_ Water is attracted to solutes with ionic and polar bonds

5) The property of a liquid whereby a surface becomes cooler during evaporation because of a loss of heat.

- A \_\_\_\_\_ adhesion
- B \_\_\_\_\_ evaporative cooling
- C \_\_\_\_\_ solvent
- D \_\_\_\_\_ cohesion

6) The tendency of water molecules to stick together is referred to as

- A \_\_\_\_\_ adhesion.

- B \_\_\_\_\_ polarity.
- C \_\_\_\_\_ cohesion.
- D \_\_\_\_\_ transpiration.
- E \_\_\_\_\_ evaporation.

7) Each class of polymers is formed from a specific set of \_\_\_\_\_

- A \_\_\_\_\_ Steroids
- B \_\_\_\_\_ Monomers
- C \_\_\_\_\_ Starches
- D \_\_\_\_\_ Polypeptides

8) Living things use carbohydrates, such as \_\_\_\_\_ and \_\_\_\_\_, to store energy.

- A \_\_\_\_\_ jayanth and emmanuel
- B \_\_\_\_\_ ham sandwich
- C \_\_\_\_\_ sugars and starches
- D \_\_\_\_\_ starches and glucose
- E \_\_\_\_\_ polymers and cheese

9) In what protein structure does an alpha helix occur?

- A \_\_\_\_\_ Primary
- B \_\_\_\_\_ Tertiary
- C \_\_\_\_\_ Quaternary
- D \_\_\_\_\_ Secondary

10) which best describes lipids

- A \_\_\_\_\_ diverse hydrophilic molecules
- B \_\_\_\_\_ diverse hydrophobic molecules
- C \_\_\_\_\_ quick access to energy
- D \_\_\_\_\_ a greenhouse gas
- E \_\_\_\_\_ a small single celled organism

11) Nucleic acids are a class of compounds that consist of the polymer:

- A \_\_\_\_\_ RNA
- B \_\_\_\_\_ nitrogenous base
- C \_\_\_\_\_ DNA
- D \_\_\_\_\_ genes
- E \_\_\_\_\_ pentose sugar

12) Which of the following is not found in a prokaryotic cell?

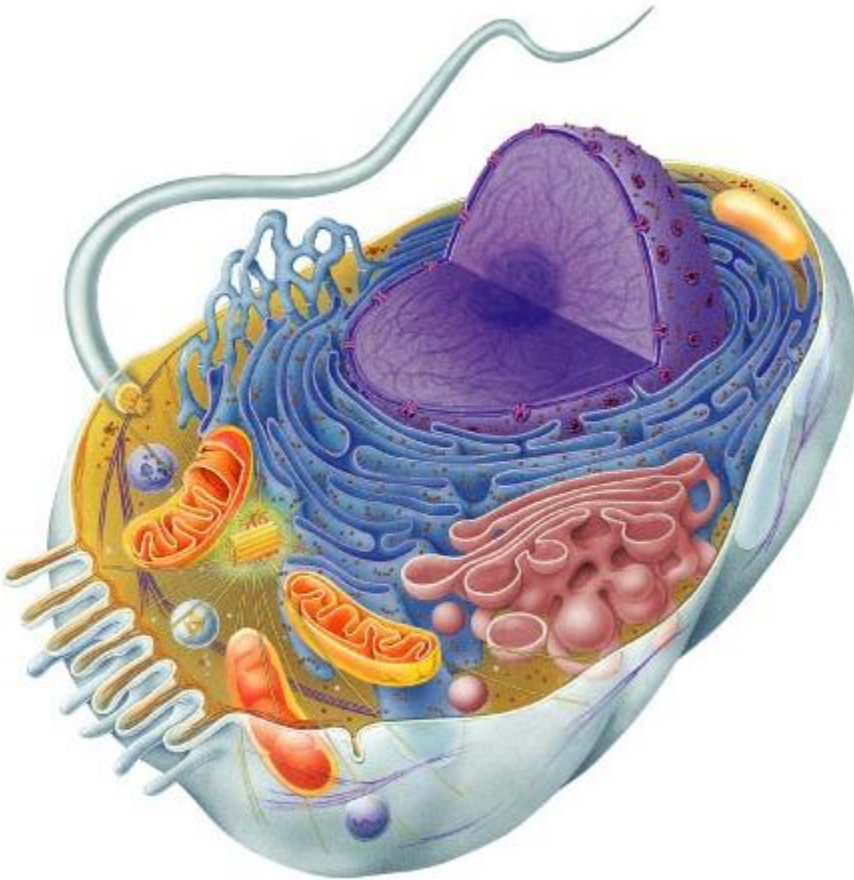
- A \_\_\_\_\_ DNA
- B \_\_\_\_\_ cell wall
- C \_\_\_\_\_ plasma membrane
- D \_\_\_\_\_ ribosomes
- E \_\_\_\_\_ endoplasmic reticulum

13) Which of the following organelles is common to plant and animal cells?

- A  chloroplasts
- B  wall made of cellulose
- C  tonoplast
- D  mitochondria
- E  centrioles

14) This is a Point and Click question. You must click on the media button.

Click on the membranes where many proteins are produced.



15) A cell lacking the ability to make and secrete glycoproteins would most likely be deficient in its

- A  nuclear DNA.
- B  extracellular matrix.
- C  Golgi apparatus.
- D  extracellular matrix and Golgi apparatus only.

16) This is a checkbox question. IT MAY HAVE MULTIPLE CORRECT ANSWERS! Check all the answers that apply.

What organelles directly read the RNA in the endomembrane system?

- A  ribosomes

- B** \_\_\_\_\_ mitochondria
- C** \_\_\_\_\_ nucleous
- D** \_\_\_\_\_ none of these

**17)** This is a checkbox question. IT MAY HAVE MULTIPLE CORRECT ANSWERS! Check all the answers that apply.

What is a purpose of the cytoskeleton?

- A** \_\_\_\_\_ to hold the cell's shape
- B** \_\_\_\_\_ to cause movement
- C** \_\_\_\_\_ to bind cells together
- D** \_\_\_\_\_ to secrete proteins

**18)** Of the following, which is probably the most common route for membrane flow in the endomembrane system?

- A** \_\_\_\_\_ Golgi lysosome ER plasma membrane
- B** \_\_\_\_\_ tonoplast plasma membrane nuclear envelope smooth ER
- C** \_\_\_\_\_ nuclear envelope lysosome Golgi plasma membrane
- D** \_\_\_\_\_ rough ER vesicles Golgi plasma membrane
- E** \_\_\_\_\_ ER chloroplasts mitochondrion cell membrane